



INSTRUMENTARIUM

NEW Orthopantomograph 200 Digital Panoramic Unit



**Orthopantomograph Model OP200D
Panoramic X-ray**



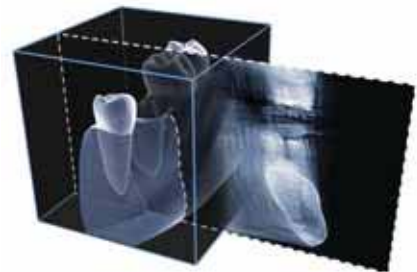
**Orthopantomograph Model OC200D
Pan/Ceph**

The New Instrumentarium Orthopantomograph® OP200 D

- The next generation of digital panoramic systems from the inventor of the original Orthopantomograph.
- Combines the latest digital technology with a unique integrated on-board computer and intelligent SmartPad touch panel control, thus providing a new era of usability.
- The SmartNav software's navigation program provides easy selection of imaging programs, arch selections, lateral scanning start position and more.
- The software also includes program animations that guide the operator in proper patient positioning and equipment operation.
- The system can be configured for right or left side operation for flexibility of installation.
- The optional pan/ceph model offers selectable one or two sensor configuration for efficient workflow and an adjustable horizontal lateral scan for optimized results with minimized patient dose.

Volumetric Tomography... an advanced tool for implantology

Provides digital tomography with reliable measurements and excellent image quality for implant site evaluation.



60 month financing available through ADC Financial, taxes additional. Payments subject to change due to manufacturers price increases and/or interest rate fluctuation. Payments include delivery and installation.

INSTRUMENTARIUM OP200D